



# RCP

RAVESTEIN CONTAINER PONTOON BV

## TYPE RCP-400S – MODULAR SELF ELEVATING PLATFORM

All new and improved, our latest RCP-400S sets new standards whilst keeping its price low. The 400S is based at our competitive rated type 250 but improves both in Payload and Waterdepth.

Compared to our well-known type 250's the 400S is improved overall with higher modules and increased freeboard, HD Couplings all-round, 25% stronger jacks, HPU Upgrade and a leg upgrade in diameter.

The platform is built up out of 15 standard RCP units, 4 Jacking Systems and 4 Connectable Spudlegs. The modular design allows the unit to be moved quickly and cost effectively worldwide.

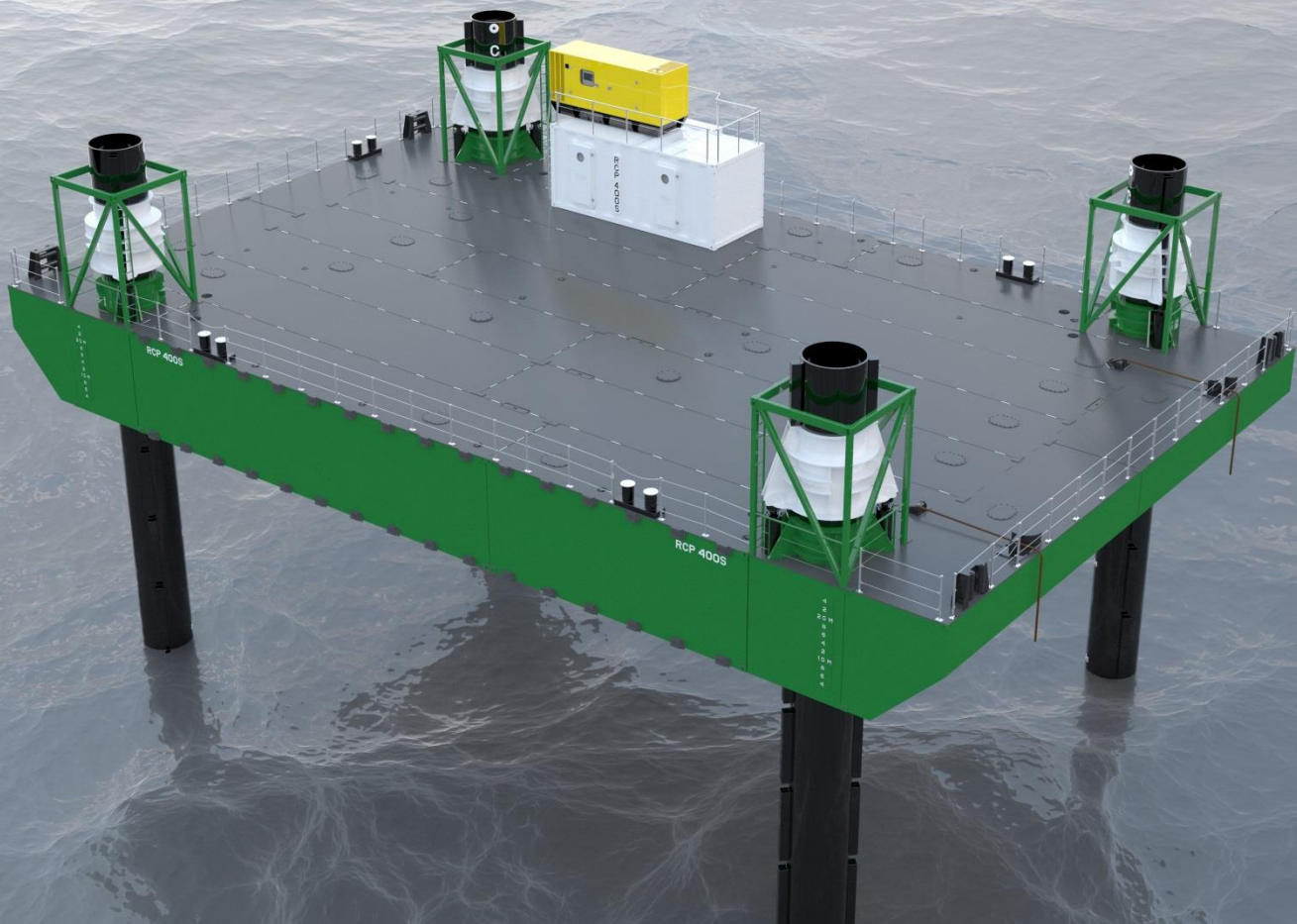
The 4 jacking systems are manufactured with a heavy duty ringlock system. Operation of this fast and heavy duty system, lifting and lowering / locking and un-locking, is done completely hydraulically from a remote control which allows the operator to jack from any position.

### Specification

- Length pontoon : 29.30 meter
- Width pontoon : 17.10 meter
- Height pontoon : 2.90 meter
- Deck load : 7.0 t/m<sup>2</sup>

### Capacity

- Mobile unit / Crawler : 300 T
- Equally divided : 100 T
- Total : 400 T
- Deck point load : 30 T





# RCP

## RAVESTEIN CONTAINER PONTOON BV

### TYPE RCP-400S – MODULAR SELF ELEVATING PLATFORM

#### Specification Spud Legs

- Length : 36.00 meter (3 x 12 mtr) or 42.00 meter (+ 6 mtr)
- Diameter : 1.40 meter

#### Specification Jacking System

- Type : Hydraulic cylinders
- Jacking Capacity (4x) : 300 Ton at 250 bar
- Locking : By means of hydraulic activated rotating locks

#### Hydraulic Power Unit

- Type : Electric Hydraulic driven powerpack
- Controls : Remote control (incl. second cable control box)
- Capacity HPU : 2x 75 kW
- Location : In deck container, with small store

#### Generator

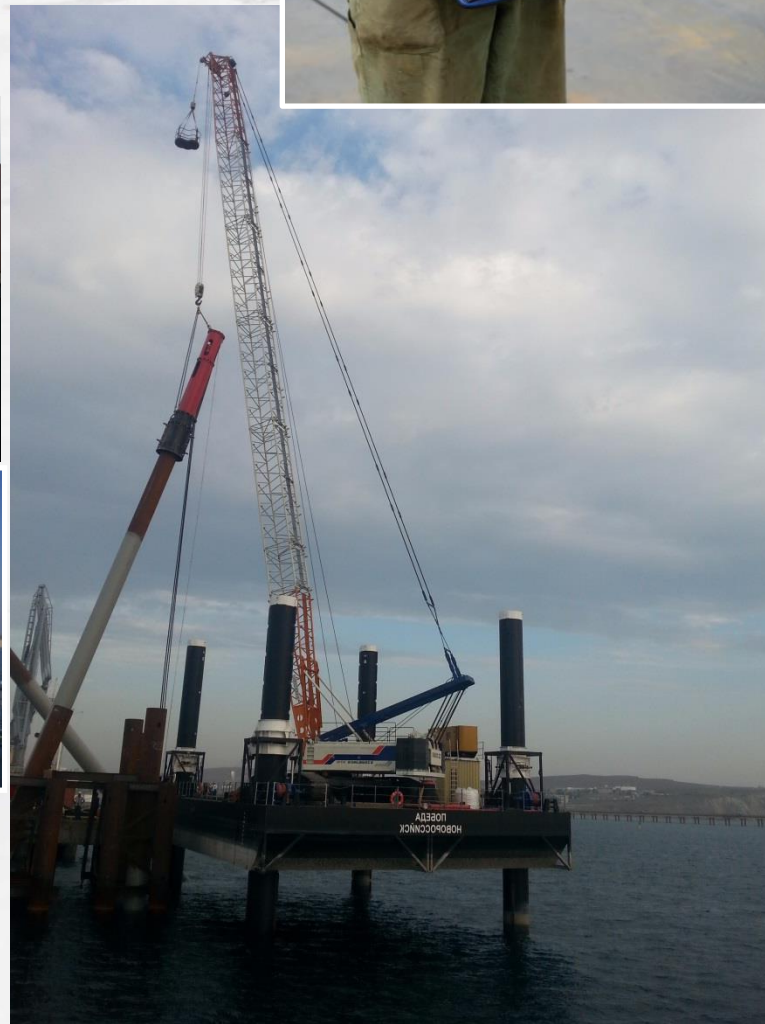
- Type : Silenced packed Caterpillar or equal, self-supporting
- Capacity : 275 kVa - On top of deck Container

#### Classification:

- German Lloyds : GL  100A5 K(20) Self Elevating Unit Coastal Water

#### Options (not included)

- Positioning winches / Deck Crane / RCP Boarding System
- Swim end units / Spud Cans
- Additional Tanks and piping systems
- Backhoe Configuration



#### **Ravestein Container Pontoon B.V.**

Waalbandijk 11, 6663 KD Deest (Holland)

Tel +31 (0)488 - 41 18 01

Fax +31 (0)488 - 41 26 47

E-mail [sales@ravestein.nl](mailto:sales@ravestein.nl)

Website [www.rcpbv.com](http://www.rcpbv.com)