



RCP

RAVESTEIN CONTAINER PONTOON BV

TYPE RCP-250 – MODULAR SELF ELEVATING PLATFORM

Jackup platform designed for support of mobile/tracked units, weight up to 150T. Such as cranes and excavators for coastal construction works and works in port and harbors.

The platform is built up out of 15 standard RCP units, 4 Jacking Systems and 4 Connectable Spudlegs. The modular design allows the unit to be moved quickly and cost effectively worldwide.

The 4 jacking systems are manufactured with a heavy duty ringlock system. Operation of this fast and heavy duty system, lifting and lowering / locking and un-locking, is done completely hydraulically from a remote control which allows the operator to jack from any position.

Specification

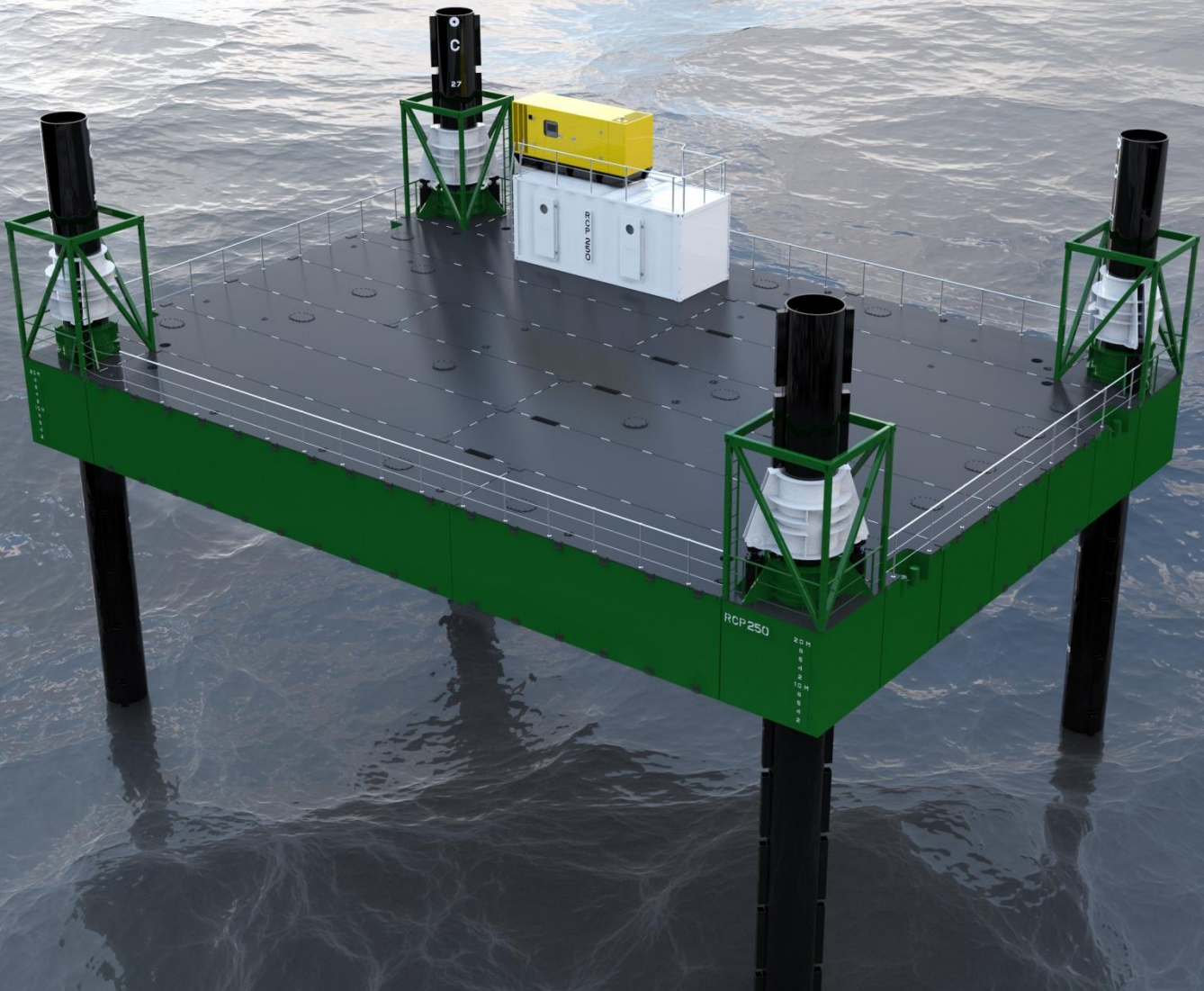
- Length pontoon : 24.40 meter
- Width pontoon : 17.10 meter
- Height pontoon : 2.45 meter
- Deck load : 5.00 T/m²

Capacity

- Mobile unit / Crawler : 150 T
- Load in Crane : 30 T
- Equally divided : 70 T
- Total : 250 T

Specification Spud Legs

- Length : 36.00 meter (3 x 12 mtr)
- Diameter : 1.20 meter





RCP

RAVESTEIN CONTAINER PONTOON BV

TYPE RCP-250 – MODULAR SELF ELEVATING PLATFORM

Specification Jacking System

- Type : Hydraulic cylinders
- Jacking Capacity (4x) : 250 Ton at 250 bar
- Locking : By means of hydraulic activated rotating locks

Hydraulic Power Unit

- Type : Electric Hydraulic driven powerpack
- Controls : Remote control (incl. second cable control box)
- Capacity HPU : 2x 55 kW
- Location : In deck container, with small store

Generator

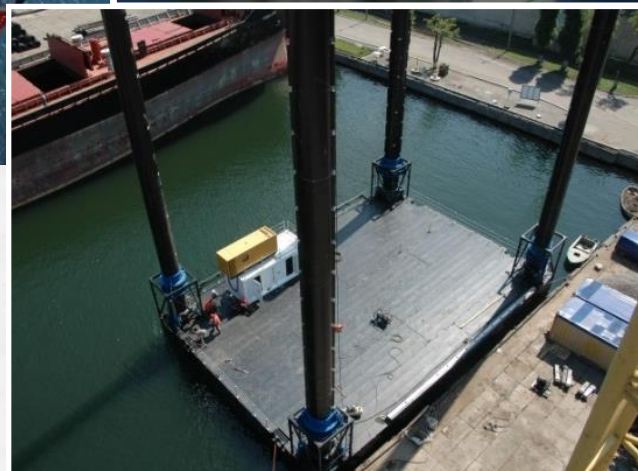
- Type : Silenced packed Caterpillar or equal, self supporting
- Capacity : 220 kVa - On top of deck Container

Classification:

- German Lloyds : GL  100A5 K(20) Self Elevating Unit, Coastal Water (or equal)

Options (not included)

- Positioning winches / Deck Crane / RCP Boarding System
- Swim end units / Spud Cans
- Additional Tanks and piping systems
- Backhoe Configuration



Contact :

David Ravestein / Aernout Goedbloed

Ravestein Container Pontoon B.V.

Waalbandijk 26; 6669 MB Dodewaard (Holland)

Tel +31 (0)488 - 41 18 01

Fax +31 (0)488 - 41 26 47

E-mail info@rcpbv.com

Website www.rcpbv.com